



Rapid Road Repair

repair™

Preventative maintenance and effective road surface repairs are all the more relevant in difficult economic times, particularly when resurfacing or resealing is cost prohibitive.

Quick and long lasting repairs reduce the overall maintenance cost of the road, maintaining a good ride quality and preventing further deterioration of the surface.

Markon's new repair™ cold asphalt is ideal for all road surface repairs and maintenance on asphalt or concrete. It provides a fast and simple solution to a wide variety of road surface damage, including potholes, surface stripping or complete surface overlays. repair™ is designed to provide a long-term surface reinstatement suitable for all levels of trafficking.

repair™ is used internationally by highways authorities, the building industry and road contractors. Its ease of use means it can also be applied in the DIY sector, for high quality, lasting repairs to surfaces such as driveways and footpaths.





RAPID ROAD REPAIR

repair™ is an easy to use, instant solution for repairing potholes and road surfaces.

The unique cold asphalt formula contains five highly specialised additives, quality penetration grade bitumen and specially selected aggregates.

To meet high internationally accepted specifications, the product is manufactured in a controlled environment with extremely strict levels of quality control.

Comparison Table

	repair™	Hot Asphalt	Standard Cold
Works in wet	✓	x	x
No tack coat	✓	x	x
No bleeding	✓	x	x
Trafficable immediately	✓	x	x



repair™ Benefits:

- Easy and instant application
- Use directly from the pack
- Can be used in varying weather conditions
- No mixing, additives, tack coats or overcoating required
- Abuts well to metal - no shrinkage
- Ready for trafficking as soon as application is complete
- Material formulated to remain flexible for some hours
- No rutting out, marking or pick up on shoes/tyres after full compaction
- Use at temperatures -5°C to +60°C
- Safe to use - non toxic, non flammable
- Stored in closed bags above 5°C, shelf life 8 months+
- Coverage approximately 1m² at 18mm compacted per 25kg bag
- Environmentally sound versus hot asphalt
- Use as preventative maintenance tool



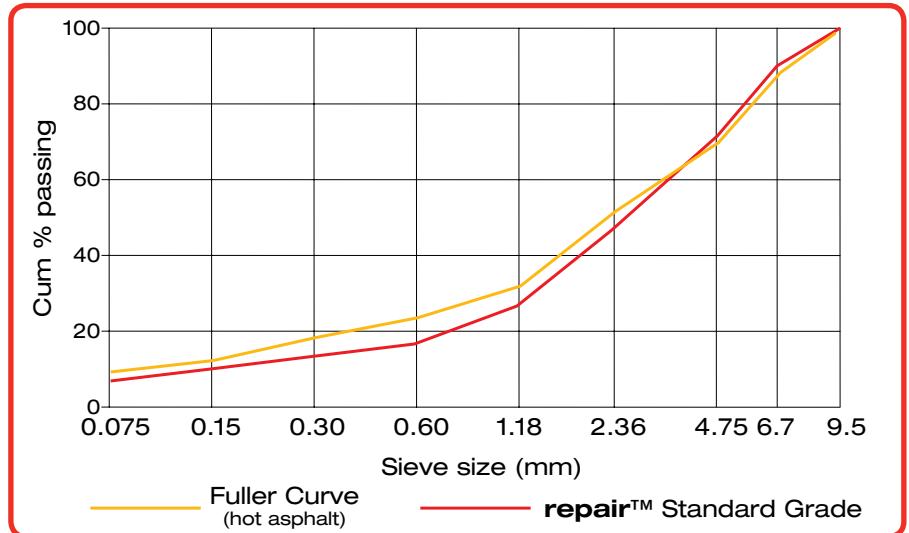
Ideal aggregate grading

In all types of road surface, it is important that the aggregate content is graded correctly in order to optimise its strength, permeability and durability. Obtaining the optimum grading can be achieved by use of an 'ideal' grading curve.

A grading curve measures the different sizes of aggregate in a road surface product and the percentage that each size of aggregate makes up of the total mix.

The most well known and accepted of these curves is known as the Fuller Curve. The Fuller Curve demonstrates the optimum grading of aggregate in a mix in order to ensure the highest level of overall durability. As can be seen here, the aggregate grading curve for **repair™** is within the envelope of a hot mixed asphalt.

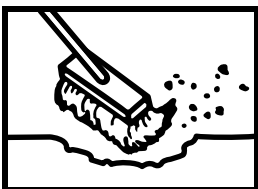
repair™ Standard grade aggregate grading



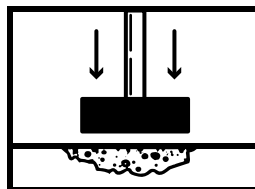
repair™ Versatility:

- Instant repair to potholes of any size / shape / depth
- Repairs to surface stripping
- Infilling cable ducts, trenches and as a joint filler
- Repairs to concrete, slab corners, cut outs, spalls
- Reinstatement around ironworks (e.g. manhole covers), landing lights, cats eyes, etc (bonds well to metal/composite materials)
- Bridge deck and core hole repairs, ramping, construction of speed humps, rumble strips and complete surface overlays
- Specified for motorways, aircraft runways, docks, highways, rail platforms, car parks, public utilities, etc
- Used by all types of industry, builders and home owners
- Complete road maintenance and preventative tool

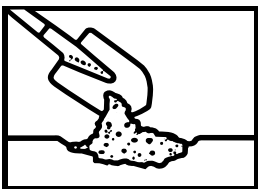
Application process



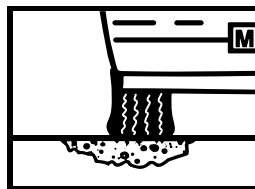
1. Brush out loose debris/water/oil from ANY shape hole



3. For small areas, compact to road level using hand tamper. Areas larger than 0.5m² use a mechanical vibrating roller/plate compactor. If underfilled, tip on more **repair™** and compact to level. Keep compactor wet with water to avoid material sticking



2. Simply add **repair™** from pack (to maximum of 30mm) and compact. Deeper holes require layering and compacting at each stage. Each layer must be no more than 30mm (no primer required)



4. On completion of repair, open immediately to traffic



Company Overview

Markon is a specialist contractor servicing a variety of different industries, e.g. Car Parks, Highways, Airports, Industrial and Architectural Landscaping.

Markon offers a one stop shop facility from specifying a product to suit your application to final installation. Markon believes you will achieve successful project completion by providing expertise in the following areas:

- **Consultation - Establishing requirements**
- **Technical Advice - Appropriate system to suit your needs**
- **Site Survey - Ensuring all project needs considered**
- **Installation - Within chosen time frame**
- **Technical Support - Ongoing**

Markon carries out stud installation and marking works to roads, parking, airfields and harbours throughout Scotland.

Our experience and capabilities are acknowledged throughout the construction industry. We have broad experience in the application of specialist surfaces that can be applied to delineate speed restriction, bus lanes, cycle paths or any other highlighted surface.

Notes:



Telephone: 01236 875134
Fax: 01236 875525
E-mail: enquiries@markon.co.uk

